

Sprinter Engineering and Compliance Support Team



KL1 Auxiliary Diesel Fuel Tap

5-23-07 DRAFT



KL1 Auxiliary Diesel Fuel Tap

(standard equipment)

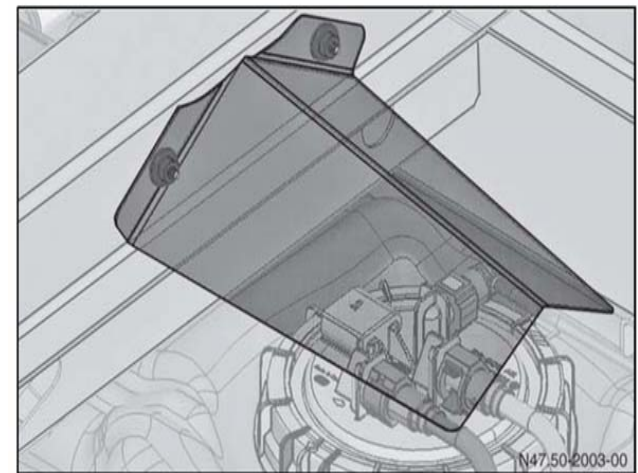
The fuel gauge sensor is fitted with an additional fuel connection to facilitate retrofitting of a fuel-powered auxiliary heater and/or generator. The fuel tank can be consumed down to approx. 5 gal.

The following must be observed for all work on the fuel system

- The installation of heat-conducting components, or of components that restrict the installation space, is not permitted.
- On no account should modifications be made to the fuel pump, fuel line length or fuel line routing. Modifications to these components will impair engine operation because these components are matched to each other.
- Modifications and attachments (e.g. additional eyelets) are not permitted in the vicinity of the fuel filler neck.
- No sharp edges permitted
- The fuel tank must not be subjected to load in the event of an impact. Deflection plates must be fitted if necessary
- Fuel lines must be secured
- Exhaust fumes must not be directed into the vehicle interior

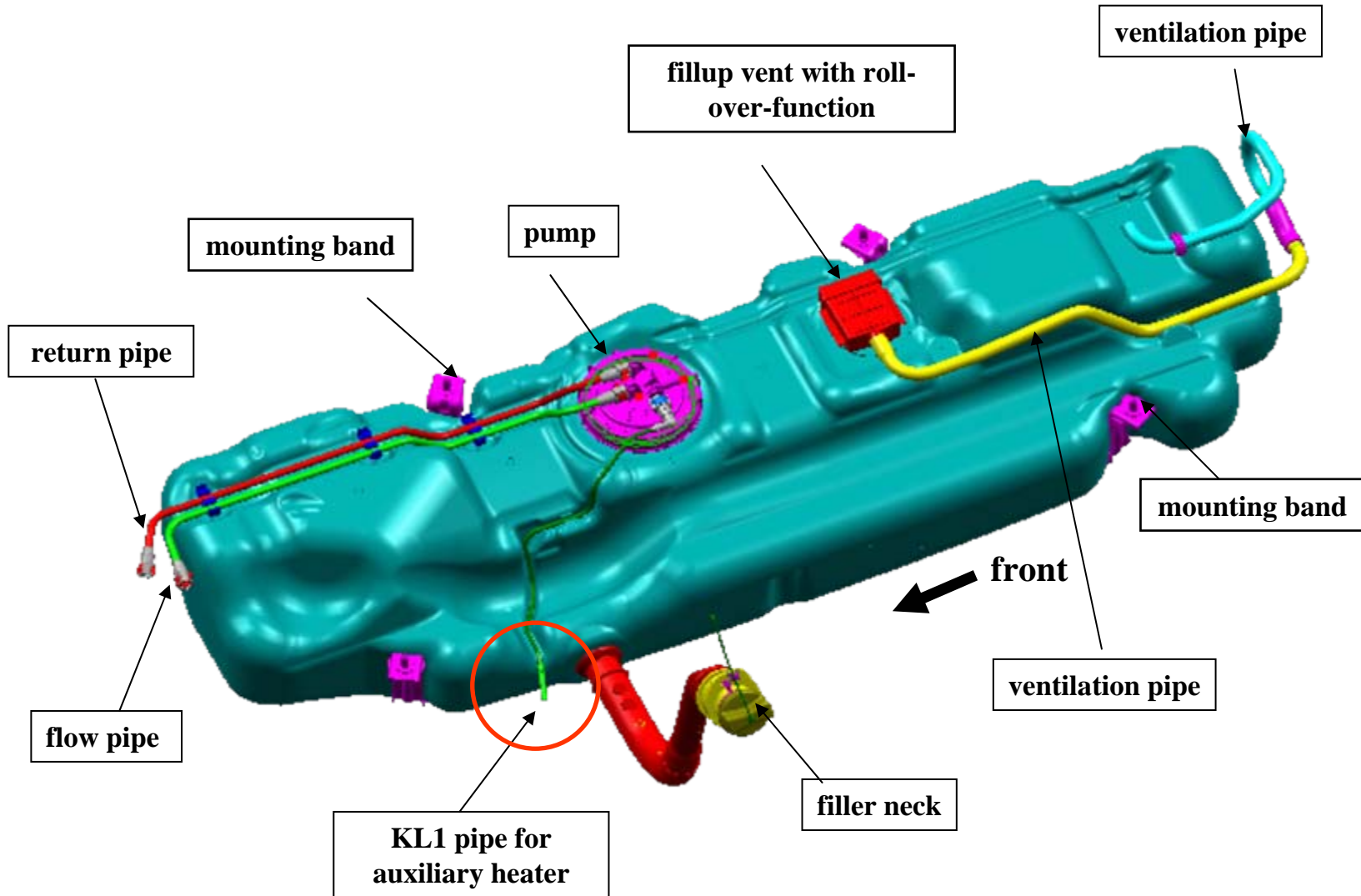
Note:

The Auxiliary fuel tap is not available for gasoline engines!

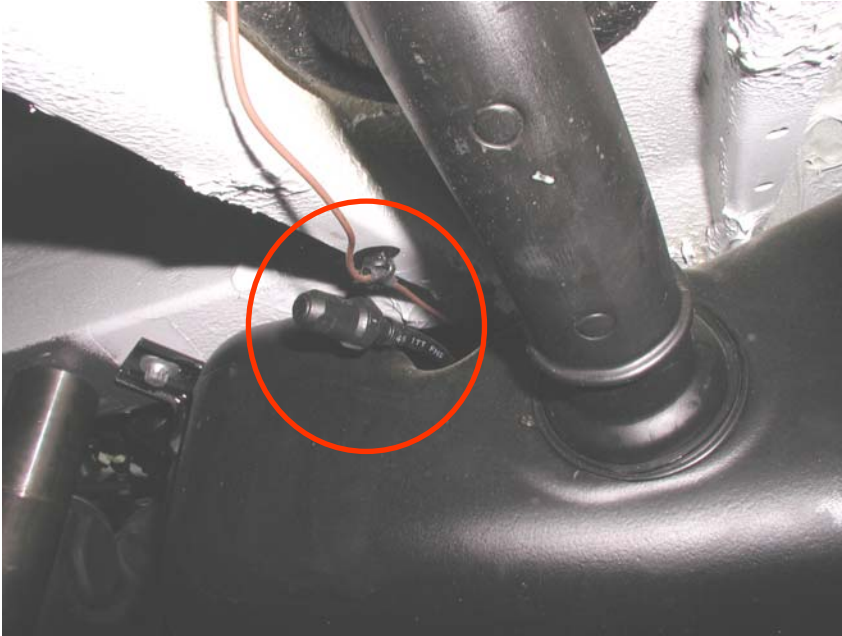


Deflection plates

Diesel Fuel System 26.4 gal / 100L

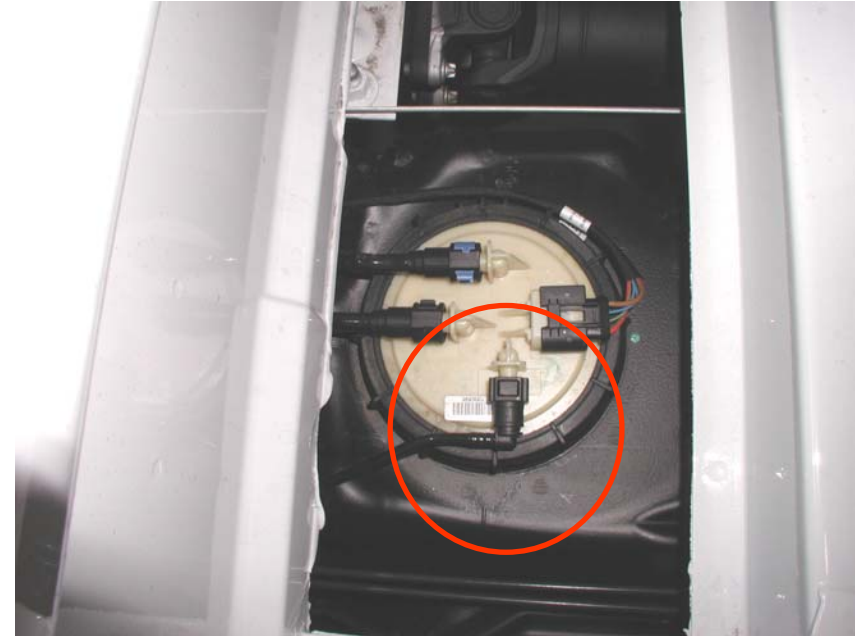


KL1 Fuel Tap Location



View from underneath without a fuel fired heater.

Picture shows a cap witch can be removed. Connector piece is \varnothing 7.89mm



Top view shows the fuel pump unit on a Chassis cab.

Fuel Tap Schematics

